

Marking Tubes, Labels and more!

MAX

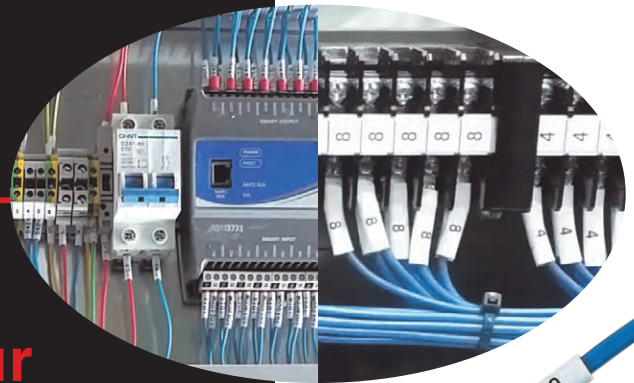
Electronic Lettering Machine

LETATWIN

LM-550A/PC

**Professional choice for your
cable marking job!**

NEW MODEL

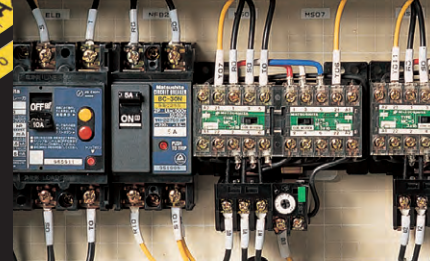
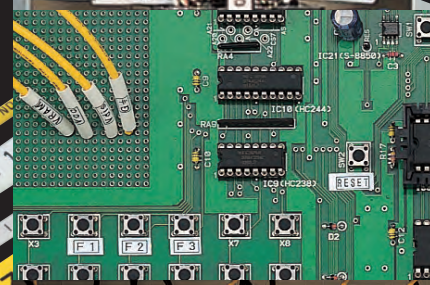


- Our fastest printing speed ever!
- Versatile printing capability!
(Tube ϕ 1.5~8.0mm)
- Connect to your PC with a
USB cable or a USB flash drive.

Comes with plastic carry case



The dedicated
"LETATWIN PC EDITOR"
application software included.



DEVELOPED FOR MAXIMIZING CABLE MARKING JOB PRODUCTIVITY



Long consumable roll length

LM-550A/PC adopts the dedicated consumables which have a longer roll length. Long roll length saves reloading time.

| | |
|----------------------------------|------------|
| LM-IR300B ink ribbon for LM-390A | 50 meters |
| LM-IR50B ink ribbon for LM-550A | 110 meters |
| LM-TP3xxx tape for LM-390A | 8 meters |
| LM-TP5xxW (White) for LM-550A | 16 meters |

*LM-TP5xxT (Transparent) and TP5xxY (Yellow) remain as 8meters.

High-speed marking

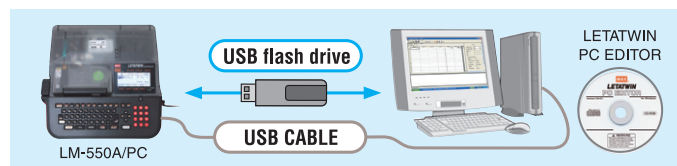
LM-550A/PC has an enhanced feeding system that provides you with marking speed at 40mm/second. LM-550A/PC can make approx 52pcs of 20mm-length tube per minute.

| | Marking time | |
|--------------------|--------------|-------------------|
| LM-390A | 100 | |
| MAX previous model | | |
| LM-550A | 88 | Saving time 12%!! |

Maximum 250,000 characters built-in large memory storage

Easy access from your PC with USB

LM-550A/PC features a USB port for a direct cable connection with a WindowsPC (for direct printing or file transfers), and a USB flash drive slot for transferring computer files made in our dedicated "LETATWIN PC EDITOR" software.



SPECIFICATIONS

| ITEMS | CONTENTS |
|---------------------------------------|--|
| Name | MAX ELECTRONIC LETTERING MACHINE LM-550A/PC |
| Dimensions | 295 (W) × 293 (D) × 94 (H) mm |
| Weight | 2.4kg |
| Printing method | Thermal transfer method (300dpi) |
| Display | LCD dot matrix : 64×160 Pixel (Backlit) |
| Printing speed | 40mm/s (Standard) 20mm/s (Low temperature mode) |
| Maximum Printing length | Tube : 20m, Tape : 5m By multiple copy printing, maximum 30copies, upto tube ; 100m, Tape ; 7m |
| Maximum number of characters to input | 5,000 characters per file |
| Character size | 1.3, 2, 3, 4, 6mm height |
| Usable tube | φ1.5mm ~ 8.0mm (PVC tube) (For φ1.5~2.0mm tubes, the dedicated attachment (standard accessory) is required.) φ2.0mm ~ 6.5mm (Heat Shrinkable tube) |
| Usable tape | Width 5, 9, 12mm (Max genuine tape) |
| Tube cutting method | Auto half cut, manual full cut |
| Internal memory | 250,000 characters (Maximum 50 files) |
| External memory | USB memory |
| Interface | USB 2.0 full speed |
| Power supply | DC12V, 3.0A <small>Use only specified AC Adapter (100V~240V) included in the package</small> |
| Power consumption | Max 30W |
| Operating environment | 10°C to 35°C |

PC REQUIREMENTS For Windows 10 / 8.1 / 8 / 7 operating systems. Windows® is a registered trademark of Microsoft Corporation(US) in U.S.A. or other countries.

The specifications and design of the products in this catalogue will be subject to change without advance notice due to our continuous efforts to improve the quality of our products.



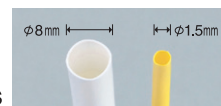
MAX CO.,LTD.

6-6, NIHONBASHI, HAKOZAKI-CHO, CHUO-KU, TOKYO, JAPAN
PHONE: 81-3-3669-8131 FAX: 81-3-3669-7104
Web: <http://www.max-ltd.co.jp/int/>

Versatile marking capability

Various marking media and sizes

- φ1.5~φ8.0mm PVC tubes
- φ2.0~φ6.5mm Heat Shrinkable tubes
- 5mm/9mm/12mm wide MAX dedicated tapes



● I.D. plates

● Oval tubes *For the availability of European style marking media, please contact our distributor.

To optimize printing quality, multiple combinations of settings (such as vertical/horizontal print positions and print density) can be saved to support European style marking media etc.

Large and backlit LCD display

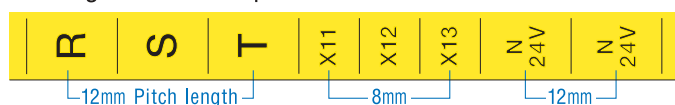
Backlit LCD display makes your confirmation of input contents easy, even if you work in a dim jobsite.



The pitch can be set up to maximum 60mm.

Marking on tape : 4 up to 60mm

Marking on tube : 10 up to 60mm * (Auto pitch function is available for more than 60mm)



Economical refill-type ink ribbon.



PRINTER SUPPLIES and MEDIA

| | | |
|--|-----------|--|
| INK RIBBON CASE LM-RC500 | 20PCS/CTN | UL RECOGNIZED TUBE 1ROLL/BOX |
| | | LM-TU332N2 WHITE φ3.2mm×100m/ROLL |
| | | LM-TU336N2 WHITE φ3.6mm×100m/ROLL |
| | | LM-TU342N2 WHITE φ4.2mm×80m/ROLL |
| | | LM-TU352N2 WHITE φ5.2mm×80m/ROLL |
| ECONOMICAL INK RIBBON REFILLS 10 ROLLS/BOX | | MAX HIGH QUALITY TUBE 1ROLL/BOX |
| LM-IR50B (BLACK) | 110m/ROLL | LM-TU432L WHITE φ3.2mm×200m/ROLL |
| | | LM-TU436L WHITE φ3.6mm×200m/ROLL |
| | | LM-TU442L WHITE φ4.2mm×200m/ROLL |
| | | LM-TU452L WHITE φ5.2mm×135m/ROLL |
| | | LM-TU464L WHITE φ6.4mm×100m/ROLL |
| | | LM-TU480L WHITE φ8.0mm×70m/ROLL |
| INK RIBBON REFILLS FOR HEAT SHRINKABLE TUBE 10 ROLLS/BOX | | |
| LM-IR508P (BLACK) | 110m/ROLL | |
| LM-IR50W (WHITE) | 70m/ROLL | |

| | |
|-----------------------------------|-------------------|
| TAPE CASSETTE 10PCS/BOX | |
| LM-TP505W (WHITE) | 5mm(W)×16m(L)/PC |
| LM-TP505Y (YELLOW) | 5mm(W)×8m(L)/PC |
| LM-TP505T (TRANSPARENT) | 5mm(W)×8m(L)/PC |
| LM-TP509W (WHITE) | 9mm(W)×16m(L)/PC |
| LM-TP509Y (YELLOW) | 9mm(W)×8m(L)/PC |
| LM-TP509T (TRANSPARENT) | 9mm(W)×8m(L)/PC |
| LM-TP512W (WHITE) | 12mm(W)×16m(L)/PC |
| LM-TP512Y (YELLOW) | 12mm(W)×8m(L)/PC |



Distributor:

D-GENERALY, spol. s r.o.
Novozámocká 222
949 05 Nitra

Prevádzka:
Novozámocká 368
951 12 Ivanka pri Nitre

Tel.: 037/6512816
e-mail: info@d-generalysk
www.d-generalysk